



MAXHUB

MAXHUB UC M40

# MEETING IS BELIEVING

MAXHUB 360° All-in-One Camera

Be seen. Be heard. Be amazed by the all-in-one conference camera that tracks every face or follows every word in small to medium-sized spaces. Small enough to fit in the palm of your hand, the UC M40 combines 4-lens precision with intelligent speaker tracking for a true 360° immersive experience naturally. The coverage is expansive. The experience is extraordinary.

# Compact design. Expansive versatility.

Style meets substance in a sleek metal design that combines easy portability with robust capability and intuitive controls and displays. From one-tap mode switching to the LED voice location indicator, the UC M40 turns even challenging spaces into productive meeting places.



> Stylish metal design



> Compact portability



> LED voice location indicator

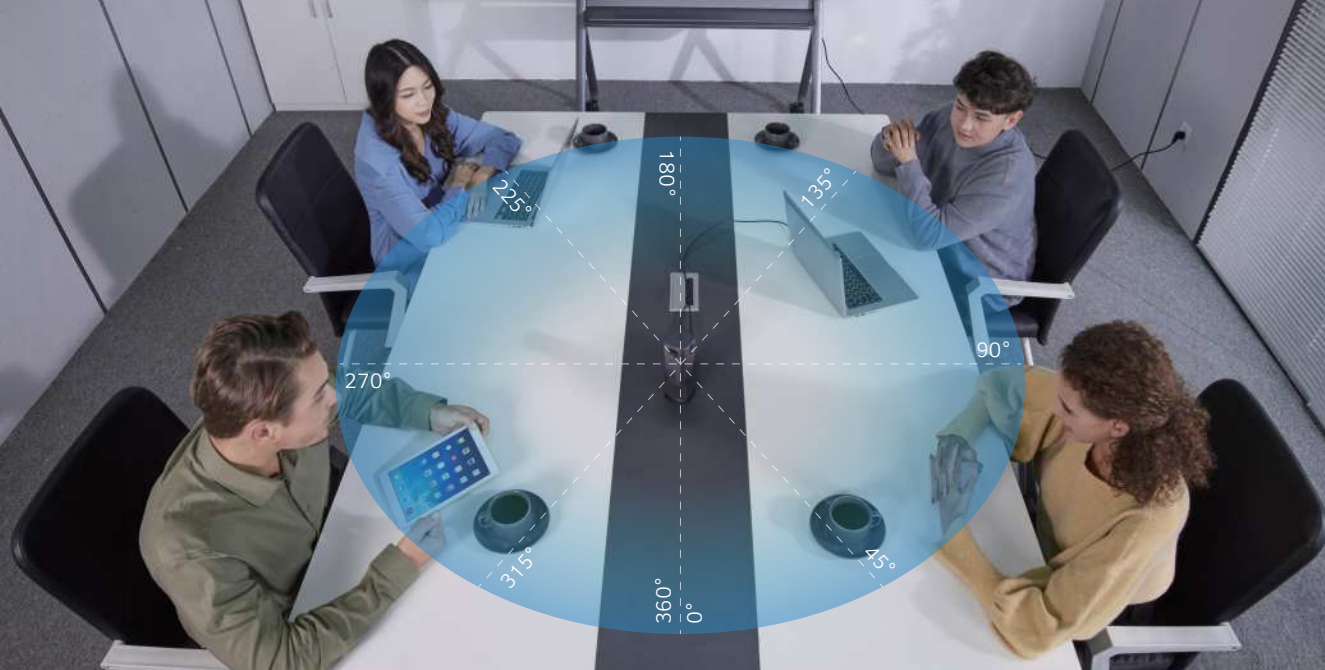


> One-touch mute

>

# 360° coverage. Minimal distortion.

Communication is more direct, and collaboration more natural and immersive.



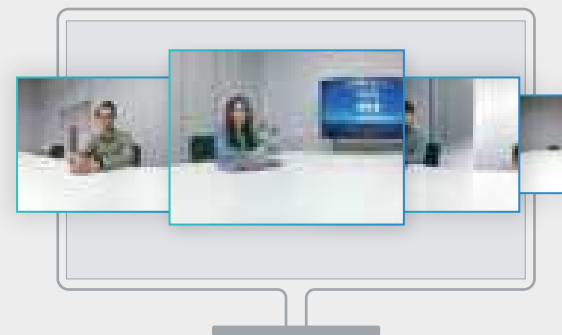
## > 360° panoramic wide-angle view

Even if you're seated to the side, you'll be front and center on the screen.



## > 5MP 4-lens camera

The UC M40's 4-lens 360° super wide-angle camera captures every participant's face directly, without fisheye distortion.



# All in the palm of your hand.

The UC M40 integrates a 360° camera, speakers, and voice-tracking microphones in a design as portable as it is stylish. Just as impressive: The camera requires no external devices or time-consuming setup efforts. User satisfaction is built right in.



360° camera



Microphone



Speaker

- > Simple setup
- > No external devices required.



# Towering performance on every platform.

MAXHUB collaboration technology is compatible with all popular video conferencing applications. Whichever platform you prefer, the UC M40 will be your conference camera of choice.



Microsoft Teams



Cisco Webex

zoom

Zoom



Skype

# Standalone Mode- Ready when you are.

Plug in the USB and start your meeting. Operating in Standalone Mode, the UC M40 provides full performance right out of the box. There's no software to install, no complicated settings to configure. Choose your collaboration scenario with a simple tap, and the intelligent speaker-tracking technology and 360° camera will take it from there.


> AI auto-tracking technology


> Two-direction simultaneous voice tracking




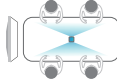
**1 Discussion Mode** 


- AI voice tracking enabled, showing the two most recent speakers
- Supports two-direction simultaneous voice tracking



**2 Beamforming Mode** 


- AI voice tracking enabled, shifting the 180° view towards the sound source.




**3 Panoramic Mode** 



**4 Quad View Mode** 



**5 Portrait Mode** 



**6 Compose Mode** 

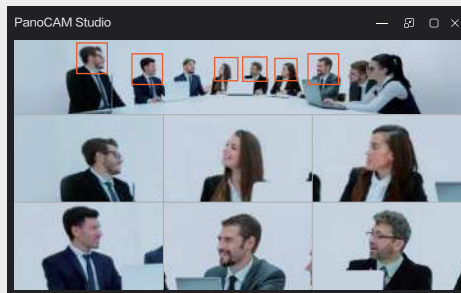



**7 Split Mode** 

# Professional Mode - For precision performance

Have special requirements for your meeting? Activate Professional Mode and you can adjust a wide variety of settings, from camera angles to custom display layouts and auto-framing settings. While the UC M40 is small in size, it's boundlessly capable of providing exactly the meeting experience you desire.

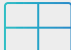
## > Auto-framing



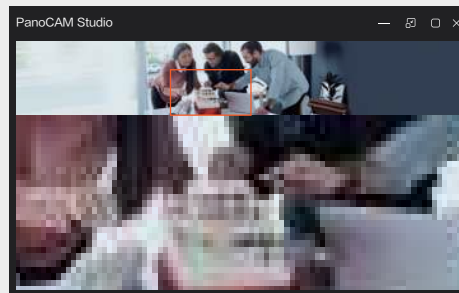
1 Compose Mode 


Combining a panoramic view with closeups, you can view the whole room while seeing 6 key participants in closeup.



4 Grid mode 

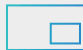
See closeups of 4 key participants simultaneously, each in their own quadrant.



2 Manual Mode 


Zoom into a specific area anywhere in the room.



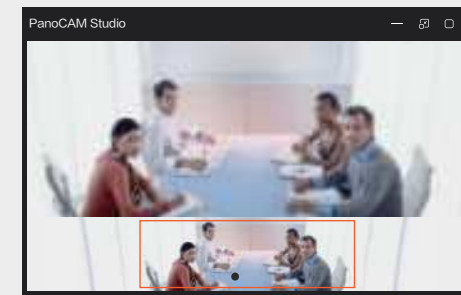
5 Presentation mode 


Focus on the whiteboard and the active presenter at the same time.



3 Body-fit mode 

Focus on all the participants



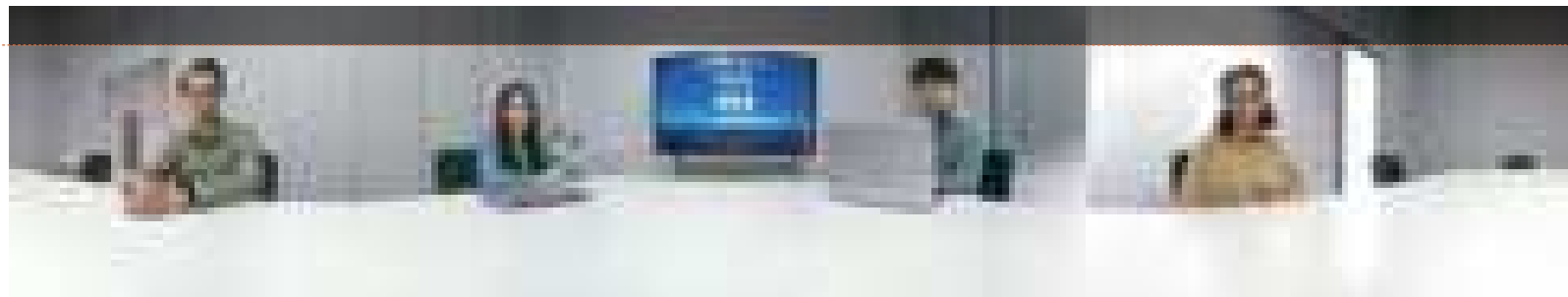
6 Speaker mode 

See the whole meeting room while focusing on all the participants simultaneously.

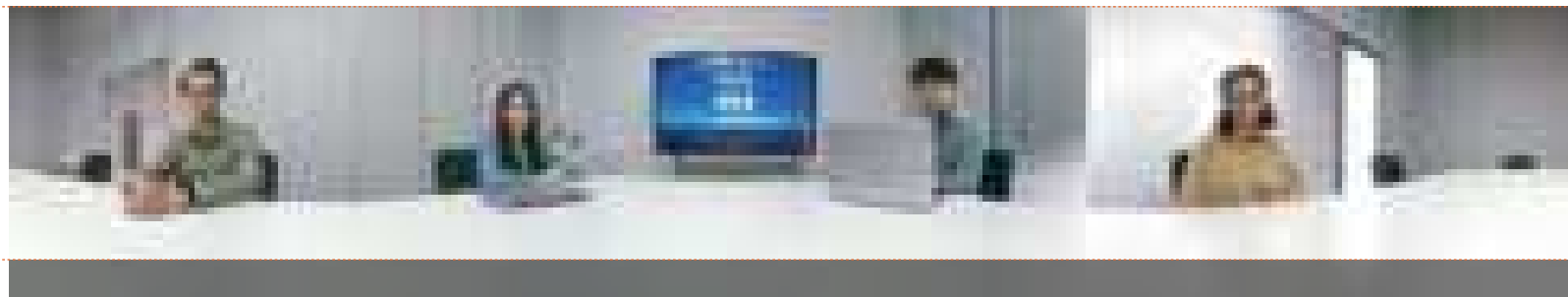
➤ Precise camera angle adjustment



Mode 1



Mode 2



## Specification

### Camera

Image Sensor	1/2.7" CMOS
Effective pixels	5M
Maximum frame rate	2560H x 1440V @30fps
Number of Lens	4
Focal length	2.49mm
Aperture	2.5
Field of view	140°( D ) , 111°( H ) , 85°( V )
Output resolution	MJPEG:4992*928@30、1920*1080@30、1280*720@30、640@360@30; YUY2:640*360
Video format	MJPEG/YUY2
Features	Real-time Hyperstiching, 7 modes of video layout

### Microphone

Quantity	Built-in 4 array omnidirectional microphones
Signal to noise ratio	65 dB
Pickup range	5m(radius)
Pickup angle	360°
Response frequency	200Hz to 8 kHz
Features	AI Voice Tracking

### Speaker

Quantity	1
Rated power	3W
Sound pressure level	75dB SPL@1m,1kHz
Signal to noise ratio	≥75 dB
Distortion	≤5%
Cavity volum	0.35L
Frequency response range	200Hz to 15kHz

### USB Features

Operating System	Windows/Mac/Android/Linux
Hardware requirement	2.4GHz Intel Core 2 Duo Processor or above  2GB RAM or above
Colour System / Compression	YUY2/MJPEG
USB	USB 2.0
USB Audio	Build-in Mic & Speaker
UVC	1.1

### Environmental Conditions

Operation Temperature	0°C~40°C
Operation Humidity	10%~90%RH

### Compatible Application

Support Major VC Software	ZOOM, Microsoft® Teams, Google Meet, Google Hangouts, Cisco WebEx®, RingCentral, etc.
---------------------------	---

### Panocam Studio Specifications

Settings	Brightness, 3D De-Noise, Contract, Exposure, Flicker, Auto Detection, Auto Tracking
Function	FOV-Top: Vertical+ 45°Up/ -15°Down
Field of View Adjustment	FOV-Middle: Vertical± 30° FOV-Down: Vertical+ 20°Up/ -40°down

Video Layout Selection	Compose Mode, Manual Mode, Body-fit Mode, Grid Mode, Presentation Mode, Speaker Mode
------------------------	--

Operating System	Win 10 or higher / Mac OS 10.13 or higher (studio software)
------------------	---

Hardware Requirement	Minimum hardware: Intel 4th generation I5 above, RAM of 4GB above Macbook Pro(2013) above, with RAM of 4GB or above Recommended hardware: Intel 7th generation I5 above, RAM 4GB above Mac Mini I3 (2018) above, RAM 8GB above
----------------------	---

### Power

power supply	12V 1A
Maximum power consumption	< 8W

### I/O ports | Buttons | Indicators

DC IN	1
USB Type-C(USB2.0)	1
Mode Button	1 (Video layout switch)
Soft Button	1 (Mute/unmute)
Indicators	8 (Sound Locator), 1 (Microphone status)

### Physical Specifications

Camera Dimension L×H×D	67.6×67.5×182.3mm
1pc Dimension (package)L×W×H	235*165*91mm
15pcs Dimension (package)L×W×H	515*255*505mm
Net Weight	450g
1pc Gross Weight	TBD
15pcs Gross Weight	TBD

### Package Contents

UC-M40 Camera	1
Power Adaptor	1
USB Cable	1
User Guide	1

### Warranty

Camera	3 years
Accessories	1 year